

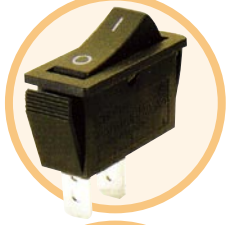
Specification: 10(4) A 250VAC T85 16(4) A 250VAC T125 1E4 15A 125V/7.5A 250VAC

RL1 SERIES

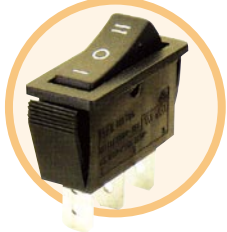
RL1-3



● RL1-311/N-C-2-RE/BK-P2
ON-OFF 3P W/Lamp



● RL1-311-C-2-BK/BK-P2
ON-OFF 2P



● RL1-313-C-6-BK/BK-P2
ON-OFF-ON 3P

EXPLANATION MODEL NUMBER

RL1-3-11/N-C-2-RE/BK-P1

Function	
11/N	ON-OFF 3P w/lamp
11	ON-OFF 2P
12	ON-ON 3P
13	ON-OFF-ON 3P

Cap Type	
A	Flat
C	Soft Line
D	W/Round Len

Cap Printing	
0	None
1	□ •
2	□ —
3	□
4	□ =
5	□
6	□ ○
7	□ — ○ =
8	□ □
18	□ □

Color Cap/Housing	
BK	Black
WT	White
RE	Red
OR	Orange
GR	Green
BL	Blue
GE	Grey

Terminal	
(P1)	
(P2)	
(P4)	
(P14)	

