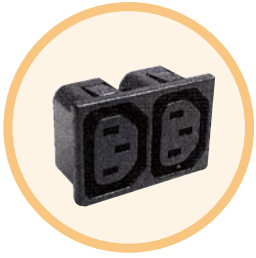


R-302G SERIES



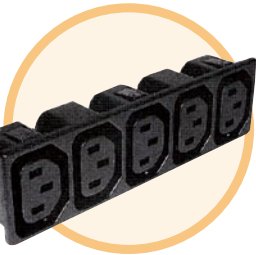
R-302G2



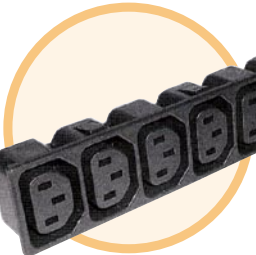
R-302G3



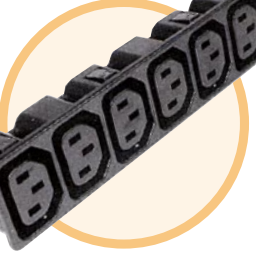
R-302G4



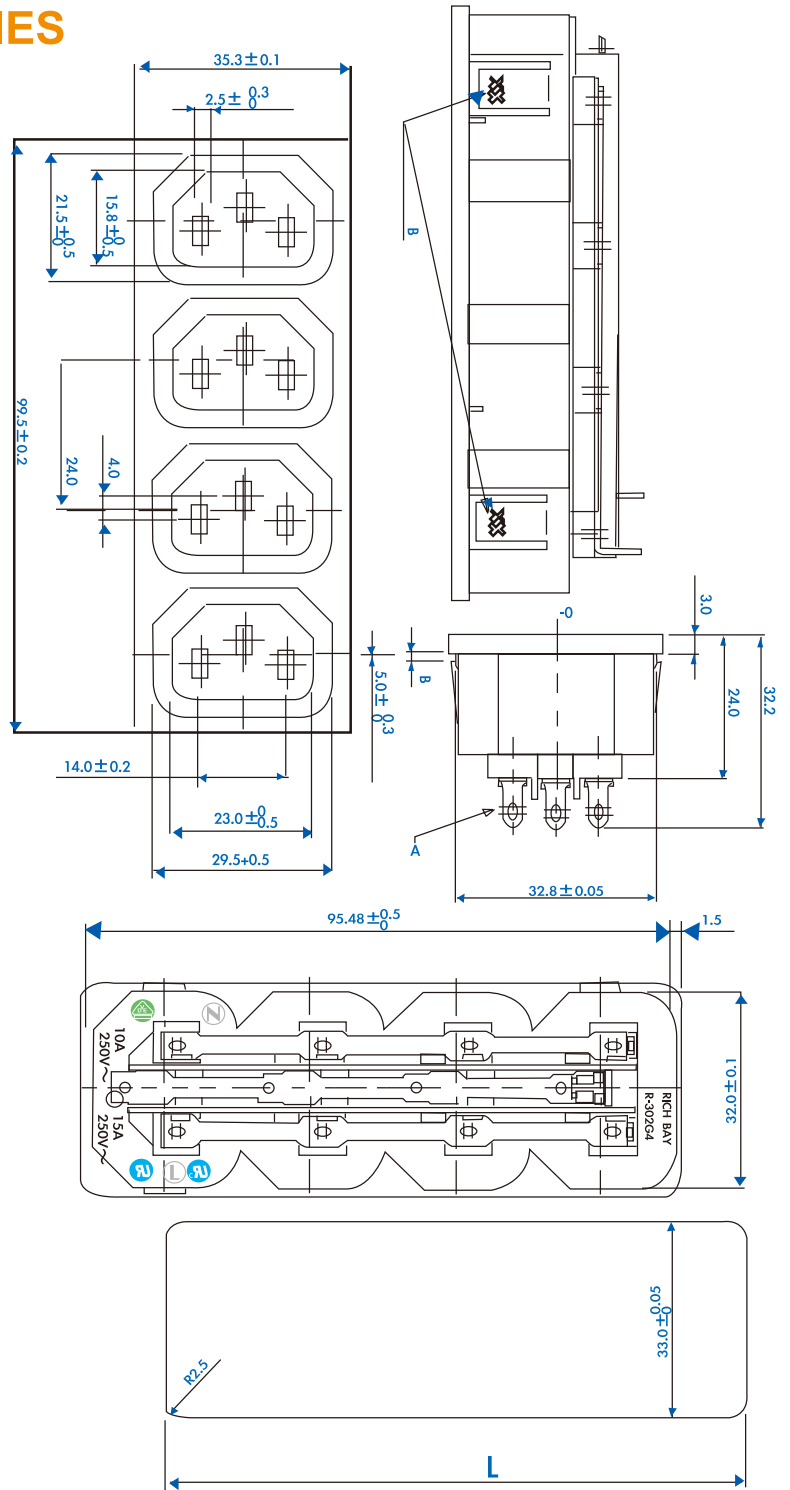
R-302G5



R-302G6



R-302G7



PANEL CUT-OUT (L)mm

	G2	G3	G4	G5	G6	G7
L	48.3 +0.2 -0	72.1 +0.2 -0	96 +0.1 -0.2	123.3 +0.2 -0	144.4 +0.2 -0	168.4 +0.2 -0

A		B	
P/N	SIZE	P/N	間隙
T-187		150	1.5
T-120		200	2.0
		250	2.5

SPECIFICATION:

- *Rating: 10A 250V AC. 15A 125V AC.
- *Insulation Resistance: over 100MΩ at 500V DC
- *Dielectric Strength: 2000V AC 1 minute.
- *Body material: Black Glass-Filled Thermoplastic. UL 94V-0
- *Withdrawing force: 10N-50N
- *Approvals: